



# ACID STAIN

## S-4000 Series Acid Stain

Super-Krete® Products offers 10 color options for acid stain. The acidic coloring solution reacts with concrete and other cementitious substrates to create a unique, translucent and variegated color effect.

**Black**

**S-4001**



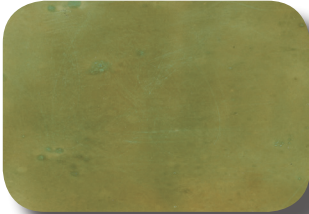
**Blue**

**S-4002**



**Bronze**

**S-4003**



**Buckskin**

**S-4004**



**Cola**

**S-4005**



**Green**

**S-4006**



**Teal**

**S-4007**



**Terra Cotta**

**S-4008**



**Vintage Umber**

**S-4009**



**Walnut**

**S-4010**



### DESCRIPTION & KEY BENEFITS

S-4000 Acid Stain is used in a variety of interior and exterior architectural concrete applications. It is most commonly used to provide floors and concrete surfaces with a distinctive look. Special beauty is added to color-hardened concrete and textured-polymer concrete when Acid Stain is used as the coloring medium. Acid stained surfaces are sealed with epoxy, acrylic or polyurethane clear coat. Both high gloss and satin finishes are available.

### COMMON APPLICATIONS

- Garage Floors
- Home Interiors
- Offices
- Patios
- Restaurant Interiors
- Retail Establishments
- Showrooms
- Themed Environments

### SPECIAL CONSIDERATIONS

- The coloring effect is dependant on the individual substrate and application methods.
- Different concrete pours within a given job site will react differently.
- The stain will not hide surface irregularities or defects.
- The stain will not be effective if the concrete is excessively worn, old, or has been previously sealed.
- Testing on the individual substrate is required to determine the specific stain effect prior to beginning the project.